

# AANISH ZHINDA ENJI YAA'YIN?

*Babaamiwwizh Kanada's  
agojing awiiyaasak.*



**Canadian Council  
on Invasive Species** **Conseil Canadien des  
Espèces Envahissantes**

1. [Kitchi Niibiish Waabshki  
Memengwaan](#)

2. [Kinadaa Zagdebweh](#)

3. [Mkade Gdag'zi  
Bineshiinh](#)

4. [Bezhgoozhii Zoowaanag](#)

5. [Waas'ko'de Niibiish'enh](#)

6. [Zaawi Giigoonh](#)

7. [Kagaa'aangwash  
Be'maa'biid](#)

8. [Epa'se'aandegwash](#)

9. [Ezhe'ooded Mesk'tooget](#)

10. [Eg'waan'zad  
Zhagenjigan](#)

11. [Bakwan Gijaag'neshiinh](#)

12. [Nimkii Dikmin](#)

13. [Waabshki Wiishkbi  
Nesoobgaak](#)



Canadian Council  
on Invasive Species

Conseil Canadien des  
Espèces Envahissantes

FUNDED BY  
**CANADA**  
SERVICE  
CORPS

FINANÇÉ PAR  
**SERVICE**  
JEUNESSE  
**CANADA**

Canada



ONTARIO  
**INVASIVE PLANT**  
COUNCIL

# AANIISH ZHINDA ENJI YAA'YIN?

Babaamiwizh Kanada's agojing awiiyaasak



Oningwiigan 45mm

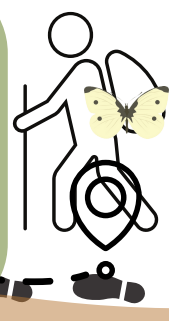
Akwaa 30mm

## Kitchi Niibiish Waabshki Memengwaan (Pieris rapae)

- Waabishkaa Oningwiigan, naabe wiji 1 makade waawiiya, Nooshi wiji 2 makade waawiiya'an
- Miinaande ashi Ozhaawashko waawaan wiji niibidegoodewan ozaawi waawiiya'an

### Aaniish gaa bi zhi di goshing maaba ebi'nash'kwe'chi'get zhinda Kanada?

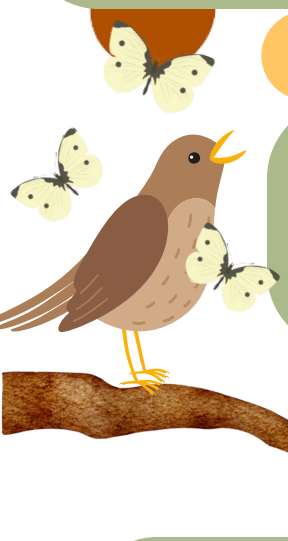
Maanda Kitchi Niibiish Memengwaan gii bidgoshin gaawii go njida giibi di'gosh'izii pii gii bi zhaa'waad zhinda nika'yaa gonda bemi daa'we'jig maage giwe bemi mesh'kidoon'ge jig. Get'igaa'deg miinwaa noonch zhich'gaadeg ezaawaab'go'niik gtige'winan mii zhiwe enji wiisinid maaba gaa bi njibaad zhiwe waawanoonhsing. Ntam gii waab'ji'gaaz'wag gonda Wemtigoozhi naang pii 1860, giibi sawesh'kaa'wag dash go.



Maaba Kitchi Niibiish Memengwaan, naad'god'nong zhin'kaa'za ewaab'shki'zid memengwaan, gii bid'go'shin Kinadaa gaawii go jida gii bi'di'gosh'zii. Nawen'daa'sa zhiwe aanind akiing gaa abi nji shki di'gosh'nad. Ntam gii waab'ji'gaaz'wag Wem'ti'goo'zhii aking pii 1860. Gaa bi nji baa'waad dash Kitchi Gaaming: (Southern Europe, Western Asia miinwaa Northern Africa). Maanda zhi'gwek bekish go njida njibaa oo'di Kitchi Gaaming (Sweden) mi'ge gweta zhinda Ni'kek'mik/Kanada mki'gaa'zad.

### Aaniish enji kitchi piitedaagok wii ka'waab'min'dwaa?

Oo'di gonda gaa bin'ji'baa'aad, sha'maw'sa'win aaw'wag. Bineshiinhyag miinwaa giwe manidooh'shenhsag gaawiin gegoo bakwan eyaaz'gok dam'waa'aan. Miinwaa dash go owa men'dat memengwaan da naad'maad'aan wii sa'webnaang oowe wii maajiish'kaam'gag get'gaa'deg.

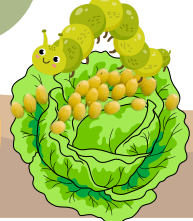


### Aaniish maaba tino bemi'nash'kwe'taad enji mina wii'doo'kaaz'sig' ina goji Kanada?

Maaba Kitchi Niibiish Waabshki Memengwaan gaawii mna'bza'sii kina goji Kinadaa nzaam ezhi maa'naad'kam'gi'zid zhiwe shkwaa ndaad'zid. Gii shkwaa daad'zid jibwaa nin tow'gid ni'too'naa'aah netowging maanpii nika'yaa dibishkoo gonaa (broccoli, cabbage and cauliflower) Maanda pii aaw'wid maaba zhi ken'mi'gaa'zaa Kitchi Niibiishi shignaa'wish.



### Aanish ezhi min'zhaan'mang'dwa miinwaa aaniish waa naab diz waat zhinda bi yaa'aat?

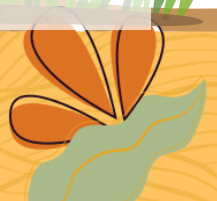


Maaba Kitchi Niibiish Waabshki Memeng'waan daa min zhaanj'gaa'za go niibina nika'yaa. Get'gaa'de'gin go daa gba'gaad'en'wan wiib'waa biin'digeb'deg waawan'oonhs'an. Aapiji go kitchi pii'ten'daag'wat wii ka'waab'ji'gaa'deg zaak'kiich'gaanhsan miinwaa wii mche daapnin owa moo'se. Aanind go maanpii Ni'kek'mik, zhmaangi wesiinhyig na'kaa'zam wii naachi'ge'yaad baatinwaad gonda ebi'nash'kweg'mig'zijig.

Zhiwe dash eshki yaa'aad kina goji, maaba kitchi Niibiish Waabshki Memengwaan dash da sa'wesh'kaa'nan wii mna'ging ge'ta'gaa'de'gin. Ezaawaab'go'niik, emja'ii'wang miish'koonh gaawii gegwa bgid'ni'gaad'es'noo maanda yaabi zhinda Kinadaa, gaawii aaw'zi'noo gimaa'wang, maaba dash wiigwa Kitchi Niibiish Waabshki Memengwaan bis'kaag'wan. Ezaawaab'go'niik diben'daa'god Brassicaceae, dgo'ten'wan gegwa aanind yaabi ezaa'waab'gon'ii'gin miinwaa kitchi Niibiishan, mem'dige go get'gaa'de'gin miinwaa zyaak'kiigin maa'jid owa memengwaan. Maanpii go kina Nikek'mik miinwaa Kinadaa, be'maad'zid'jik din'kaaz'waa'aan ninda zhmaangi wesiinhyig Cotesia rubecula miinwaa Cotesia glomerata wii nakaa'zang wii mina' kchi'geng bekish.



Maagon indizhaan gikendam Oregon State University  
Maagon indizhaan gikendam izhi Electronic  
Akiing gojing British Columbia



# AANIISH ZHINDA ENJI YAA'YIN?

Babaamiwizh Kanada's agojing awiiyaasak



2 -5 ft akwaa

## Kinadaa Zagdebweh (*Cirsium arvense*)

- Ozhashkwaa okiji-objibik
- Niibiish wiji baashdaagwaan miinwaa zaageyaan'kweshin
- Waabshkaa waabigwan izhi zhoomin miinaande, pompom-inendam

### Aabiish Gaa Binjibaamgag? Miinwaa Aaniish gaa bi zhi digwoshnoomgag?

Gonda Ebinashkwegmigzidjig ezhi kenmindwaa "Kinadaa Zagdebweh" gaawii njibaamgasinoo Kinadaa megwaach njibaamgad Kitchi waasaa Kitchi Gaaming oodii naawa'ing nika'yaa. Gonda gaabi yaajing ntam giibi pchiw'doo'naawaa miinwaa gii pchi zhin'kaa'daa'naa'waa giwii Kitchi Gaaming gaa bi nji'baa'jig gii nen'moog gii biidoo'waad Wemtigoozhoon.

Maanda Enashkwegmigzidjig aapiji minagin enji zaagaateg miinwaa zaagkii enji paamenmigaadesnook dbishkoo jiigi miiknaang, zii'biikaaning, gti'gaaning miinwaa miishko'kaan'ing wiiba Odemin Giisong miinwaa kina go ni'niibing. Zag'deb'weh go ga'ye maa'jii'gin kitchi ooden'aang meg'we wiigwaaming bemipizang miidash wiigwa zhiwe me'di'ge jiigi miikanang, zii'biikaaning, gti'gaa'ning miinwaa miishko'kaaning.



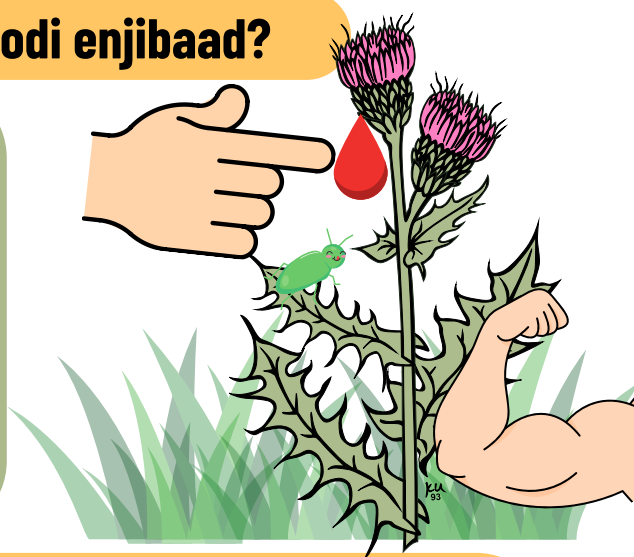
### Aaniish maaba enji mina wiidookaas'sik kina goji Kinadaa?

Maanda Zagdebweh, ezhi ginoozid miinwaa ezhi zhaabnigaazwit, niizaanendaawgozi zhiwe besha mi ging ga'ye get'gaadeg, miinkaanenhsan miinwaa gtigaanan. Gaawii go nishisnoo beshaa mi bdakdeg zhiwe gtigaaning nzaam gaawii waankiisnoo jida go naa zhiwe ebdakdek, miinwaa go miijim bemaadzidjig maaj'waad miinwaa nend'wend'moo'waat. Miinwaa maan'enj'gem'gad zhiwe gii'song bi naas'ged, waa zhi mshki'kii'wang owe gtigaan, miinwaa nbiish, miidash gaawii aapiji kitchi maajii'k'sin'oo gegoo aapiji. Miidash gegwa bizhi daa'aad mskwa'diis'mina manidoo'zhenhsag, ook'weg em'waa'jik mnaaminan miinwaa manidoonhsag ebinaaj'too'waad tomatoo'in.



### Aaniish ga'ye maaba Zagdebeh ezhe'yaad oodi enjibaad?

Tenwaan ngodwaasmidna shi niizh zhaabnigaanhsan miinwaa go endsa bebezhiig go mina'ginwoon go kina goji. Maanda "Epgishmok Zagdebweh" ge'wii debendaagod Kitchi Mookmaan'king, jibaam'gad oodi Epgishmog jiigi nbiing nika'yaa kina go goji piinish go ani zhaawanong nika'yaa nibiing, aapiji dash mina'gin miinwaa nishin zhiwe tinwan akiing.



### Aaniish ezhi min'zhaand'mying miinwaa aaniish ge ni naang'zhemgag ninda kina go kojiing?

Maanda tinow enii'zaanag miish'koong temgad kina goji, oodenwi'sing miinwaa endaajig aabdig daa moo'naawaa manda Kinadaa Zagdebweh mem'di'ge go zaag'kiimgag beshaa enji gtigeng. Egaa'sing'in da mche pkoj'bidj gaa de noon, niwe dash mechaagin owe em'shki'kii kaadeg daa na'kaazam. Zhiwe enji shki temgag, maanda Kinadaa Zagdebwehbe go wek'wendaagod wii ni kitchi maajii'shkaamgag noonch gegoo.

**Maagon indizhaan gikendam gawaabam Michigan Department izhi Natural Resources!  
Maagon indizhaan gikendam gawaabam Nature Conservancy izhi Kanada**



# AANIISH ZHINDA ENJI YAA'YIN?

Babaamiwizh Kanada's agojing awiiyaasak



Fran Wiesner

## Mkade Gdag'zi Bineshiinh (*Sturnus vulgaris*)

20 - 30 cm ginwaa

- Ozaawi okoozh
- Miinaande-zhashwa miinwaa waaside miigwans izhi niibiin
- Agaas ozow

### Aaniish maaba tinoow gaabi zhi dgoshing Kinadaa?

Maanpii Kitchi Akiing yaaying, maaba mkade egdagzid bineshiinh gii bi njibaawag ooshmi ngodwaag minig gaabiinaadjin Eugene Schieffelin oodi Kitchi oode'na New York City gii ngoding mdaaswaag shi nshwaaswaag shi zhaangsmidna maage go ooshmi biboongag. Bezhiig aadsookaan zhibiigaade maaba Schieffelin gii ndawendaan gonda bineshiinhsag gaa dibaajmindwaa William Shakespeare da maanjiinwin wii bizhaa'aad maanpii Kinadaa. Ntam gii dnaatchigaazwag gonda Kinadaa mdaaswaag shi zhaangswaag shi mdaaswe shi zhaangswi biboongag.



### Aaniish maaba tinoow enaang'zhed gaa bi njibaa'aad?

Ga'yenwa gonda enj'baa'aad, da miijnaa'aa mem'dige maanwang menpwa'gog, miinwaa dash da aawag wii zhiibaabideg miin'kaa'nenhsan. Daa mwaa'an go ga'ye nii'we mnidooshenhsan e'binaaj'toojig get'gaadeg miidash ani ngo'shkaa'aat niibina kitchi mnidoonhsag ebinaaj'toojig get'gaadeg. Aapiji gegwa gonda ntaa deb'nigwaan aanind egaasiinhjig wesiinhsag wii mwindwaa.

### Aaniish maaba tinow enji mina wiidoo'kaaz'sik kina go goji Kinadaa? Aaniish enji kitchi aa'wang wii min'zhaand'waa aabdeg?

Gonda mkade gdagzi bineshiinhyig gaawii min biza'sii'wag kina goji Kinadaa nzaam. Ntam, aawag ne'chiw'toojig noonch gegoo mii'j'waad ge mii'j'waa'pa gonaa ga'ye aanind. Ekwa niizhing, Boon'namoog megwaach naanan waaw'noonhsan pii jit'se'nig, naad'go'noong go niizhing ensa baboon, miidash ezhi kitchi maa'jiish'kaa'aad. Ekwa nsing dash, dibii'iidig go maaba daa'daa. Bash'gen'daa'naawaa dash wiigwa mtigwang yaa'aad gonaa giwe jida bineshiinhyig waa yaap'niik zhiwe, ooshmi ge'daa'aah'naa'aah sas'win. Ekwa niwing, aapiji niibina mibi'zawag maam'wi de kwa'naash'ko'waad jida go nah zhiwe eyaap'niik bineshiinhyig.

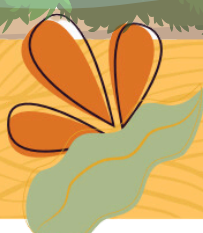


### Aaniish ge zhi min'zhaanj'gaaz'waat miinwaa aaniish ge naang zhe'aah'pa nango yaa'aat?

Bezhiig me'maan'ji nishing wii min'zhaan'mind'waa gonda mkade gdagzidjig bineshiinhyag jibwaa bgid'ni'gaaz'waad kwe bineshiinhyig jibwaa sas'win'ke'yaad mka'koonhs'ing. Daa kshki'chi'gaa'de maanda nzaam gaach'toong wii biindige'yaat. Gaawii gonda mkade gdagzi bineshiinhyig naag'den'maa'sii'wag Migratory Birds Convention Act, wdaa daapnigaadenwango saswinan miinwaa go daa nchigaazwag. Zhinda enji shki yaa'aat, gonda mkade gdagzi bineshiinh yig daa naadmaagewag wii noondaash wii yaa'aat mnidoo'shenhsag ben'aa'j'too'jig get'gaadeg.

Naad'god'noong mkade gdagzi bineshiinhyag da mwaa'aan manidoonhsan kina goji gti'gaan'ing, wiinwaa dash gegwa ga'ye niisk'ziwag. Daa min'zhaanj'gaaz'wag dash go weweni nzaam maanda 1918 Migratory Bird Treaty gweta naag'doo'wen'maan jida eyaadjig bineshiinh'yig. Daa daap'ni'gaa'den'wan saswinan, nchi'gaadeg waaw'noonhsan, miinwaa go nsin'dwaa.

Maagon indizhaan gikendam gawaabam Cornell Lab  
Maagon indizhaan gikendam gawaabam Audubon



# AANIISH ZHINDA ENJI YAA'YIN?

Babaamiwwizh Kanada's agojing awiiaasak



1.5 m - 2 m ginwaa



## Bezhgoogzhii Zoowaanag (*Butomus umbellatus*)

- Niibiish nikoden niso-bajiishkaa aazhideyaa, 1m akwaa
- Waabigwan agawaate'on-nikoden miinande, Waabishkaa izhi miinaande

### Aapish enjibiyaan? Miinwaa awenen imaa?

Bezhgoogzhii Zoowaanag (*Butomus umbellatus*), naad'god'nong zhi kenjgaa'de Water Gladiolas maa'ge Grassy Rush. Mii gweta bezhigong maanda njida gonaa enjbaamgak Butomaceae ezhi nawendaa'sat oodi Africa, Asia miinwaa Europe. Ntam gii zhibii'gaa'de maanpii nikeg'mik (North America) pii Mdaaswaag shi nshwaaswaag shi zhaangsmidnaa shi nshwaaswaag biboongag (1897) oodi jiiigbiig St. Lawrence ziibiing besha Moonyaang. Aapiji dash go kitchi nash'kwek'taam'gad nango kina goji enji nbii'wang kina akiing. Megwaach gii bidgoshnamgad maanda bezhgoogzhii zoowaanag zhiwe kitchi kog'sa'gong ebiishwang emiwjigaadeg pii ziigweb'ni'gaadeg. Gii nakaazam geg'wa wii se'gaach'geng gtigaan'ing niibina nsa'biboon.



### Wegonen onji eshwaybak akiing Kinada?

Bezhgoogzhii Zoowaanag nbiishing mi temgag zhinaagod go kitchi niibiishan tenwan miinwaa giniiwaande'noon waaskonenhsan. Ge naad'maagem'gag ba go wii nsid'waab'daming maanda gonaa ga'ye zhiwe niibina temgag aanind ezaag'kiig zhiwe pii waas'kone'snook, nsid'waab'ji'gaa'de go nsing zhi'jii'yaag niwe nii'bii'shan. Bezhgoogzhii zoowaanag aan'ke'shkaa'noon mem'di'ge go zhiwe enji jii'b'ke'wang mii zhiwe maad'semgag niwe eshkbagoonhsan. Ninda eshkbagoonhsan dash wenpaanad wii bkweh'kaag miidash niisaad'jiwang gojii yaabi bkaan wii nji maa'jii'ging miidash miinwaa noonch ni zaag'kiig. Maanda Bezhgoogzhii Zoowaanag goji bkaan bin'ji'baam'gag bi nash'kwe'taa zhiwe enji mna'ging gaa dash wiigwa mina'too'siimgad zhiwe njida gonaa gegoo zaag'kiig miinwaa anjitood zhiwe nbiing enaag'mig'ban miinwaa gbaab'wichige zhiwe nibi waa mi zhiwang. Miidash go noon'daash temgag gonaa njida go naa waa shi zaag'kiig'ban miinwaa ezhi giigoonh'kaag'ba. Temgag gegwa ninda jii'gi nbiing niisk'kaa'gem'gadnoon go ga'ye zhiwe waan'ji bg'i'zang minwaa jii'maanan be'mi pi'deg.

### Aaniish maaba Bezhgoogzhii Zoowaanag ezheyaamgag jida gonaa enji'baamgag?

Njida go maanda Bezhgoogzhii zoowaanag enj'baam'gag, mki'gaa'de go zhiwe enji nbiish'wang besha, miinwaa waas'ko'ne gtigaan'ing zhiwe enji mina'waab'minaa'gog mem'di'ge go ezhi waas'ko'ne wang. Oo'we jii'b'kenh baas'gaa'de miinwaa shig'jiw'gaa'de wii na'kaaz'ang bkwezhgan wii zhitong aanind go zhiwe Europe. Giiwe nend'waab'dang'gik miijim ezhi miigwet maaba Bezhgoogzhii zoowaanag ga'ye wiisiniwag miinwaa gaawii nash'kwe'aah'siin niwe besha eb'dak'de'gin.



### Aaniish gezhi min'zhaand'mang maanda Bezhgoogzhii zoowaanag miinwaa aaniish ge naang'zheg'ba zhinda nango tem'gag?

Bezhgoogzhii zoowaanag aabiji maa'jii'gin go zhiwe ga'ye ezhi sa'wesh'kaag ezhi miin'go'wew'zid. Kina dash aabdig wii nboo'toong giishpin wii min'zhaand'ming wii ntoong. Noonch go egaa'ching'gin go daa'pkob'ji'gaa'den'wan. Niwe go now'wi'ying yaaw'gin go daa giish'ko'den'wan naa'mi nbiing miidash ji gzo'biimgag. Niwe me'maach'aagin Bezhgoogzhii zoowaanag da dawaendaagod wii mshki'kii'kaa'deg wii nchi'gaa'deg. Zhiwe dash wiigo temgag Bezhgoogzhii zoowaanag aapiji go nashkwe'taagemgad.



**Maagon indizhaan gikendam gawaabam Bezhgoogzhii Zoowaanag Mino Gimaa izhichigewin-naang Ontario Invasive Plant Council**



# AANIISH ZHINDA ENJI YAA'YIN?

Babaamiwizh Kanada's agojing awiiaasak



Shpiming 7m akwaa



## Waas'ko'de Niibiish'enh (*Frangula alnus*)

- Gaawi miinensmin'gaawansh, ozaawi mikzaat
- Gnoosh-niibiish wiji gweks
- Agaas waabshkaa waabigwan onji Zhoomin min

### Aabiish enji'baamgag? Aaniish gaa bi zhi dgosh'noom'gag?

Waas'ko'de Niibiish'enh, njida gonaa gii bi njibaam'gad Kitchi Gaaming (Europe) wii miiz'ne'aah'biid jibwaa mdaaswaag shi nshwaaswaag biboongagba. Gii bi dbinoo'shimaad gegwa wesiinh'san. Bi aaw'wi dash wiigwa enashkwechiged, enchew'zid maage egaachiinhyid mtigoonhs, daa shpii'gi gegwa piinish niizhwaas'zid. Maaba Waas'ko'de Niibiish'enh go kina goji dgwa, enji nsaa'baa'yig, wii miiz'ne'aah'biid, gete gtigaaning, mide'kaaning, shi'we miikan'aang miinwaa enji miishko'kaag, miinwaa dash bineshiinhyig da sawesh'kaa'naa'waan miin'kaa'nenhsan.



### Aaniish en'naang'zhemgag maanda Waas'ko'de Niibiish'enh njida gonaa enj'baam'gag?

Zhiwe njida enjbaam'gag, Waas'ko'de Niibiish'enh miig'wen waan'ji gbes'haad akiing endaa'jig wesiinhsag miinwaa bineshiinhsag, pii ani gbab'kwe'aag mii weweni ani dbi'noosh'na'waad jibwaa debnig'waad be'baa'giw'sen'jin. Niibina go waabi mnik'we'jig e zhi waas'kon'enh'wang maanda Waas'ko'de Niibiish'enh nji zhiwebad niib'ina gegoo wii maa'jii'ging. Oo'we maanwang maaba Waas'ko'de Niibiish'enh maag'wet niibina noonch gwa bi'neshiinhyig zhi miingo'wew'zi'wag.



### Aaniish maanda enash'kwech'gemgag enji minab'des'nog Kinadaa?

Maanda Waas'ko'de Niibiish'enh aapiji wewewiib'gin bak'noo'waan go aanind zhiwe njida gonaa zhiwe e'zaak'kii'gin ooshmi wii nakaazad owe maas'get owa giizis. Mii'gwa maaba ntam ezaa'gaab'go'niit mnookmig miinwaa shkwaach enaach'tood niibiishan ani'dgwaagik. Mii go maaba memaanji gbeying emaad'ziim'gag pii dash niwe aanind ezaak'kiigin. Miinwaa dash Waas'ko'de Niibiish'enh zhi kshkew'zi zhiwe jib'kenhsing wii ngaas'dood aanind wii maajig'waad, miidash ezhi kitchi maajii'ging wii. Shkwaach dash, Waas'ko'de Niibiish'enh bdak'deg ji'gin owe myaa'naadag mii go ezhi binaadak owa miizhmesh bimaad'ziwin.



### Aaniish waa zhi minzhaandming miinwaa aaniish ge'naang'zhem'gak'ba zhiwe nango temgag?

Memanji ntam go, wii min'zhaanin maaba Waas'ko'de Niibiish'enh wii bwaa kitchi maajii'ging. Mii maanda gezhi ngwash'kaag ani mis'eg. Nda zhich'ge'win go bekish na'kii'waanhsing miinwaa mshki'kii kaadeg wii nboo'toong maanda maajii'gin.

Eshki maajii'gin miinwaa egaachingin Waaskode Niibiish'enhin go daa pshkob'ji'gaa'denwan. Ooshmi mechaa'gin mshki'ki nda'wen'daagod. Zhiwe shki temgag, maanda Waaskode Niibiish'enh go de dbi'noosh'maan mtak'mik bemi yaanjin bineshiinhsan miinwaa wesiinhsan. Ezhi maanwit go tenwan niibiishing piinish ani gboong, sha'maat niwe bineshiinhyin zhaawanong ezhaanjin. Wii minzhaandjgaadeg Waaskode Niibiish'enhin, aabdig wii mkwenjgaadeg minig gegoo waa naabdag, waa'na'kaa'zang ge, miinwaa waa zhi na'kiich'gaadeg. Noonch na gegoo da aab'dad, miinwaa nakii'waanhsan maa'ge wii mshki'kii'kaadeg waa zhi ngaab'doong. Wiiba gwa mnookmig memaanji nishing wii nda kendming miinwaa waa zhi minzhaandming wii bwaa kitchi nashkwetaamgag zhiwe njida go naa etegin. Wiib'waa go shkwa taa toong oowe maanwang miigwa nishing nzaam mii oowe enji kitchi maajii'ging. Oowe aanind ezhi minzhaandjgaadeg giishkodmang maage jaagzigaadeg go wenbig nishin gaa dash wiigwa nchi'gaa'des'noo weweni.

Aabiji kawaabdaming miinwaa aabjitaang minzhaandming maanda Waaskode Niibiish'enh go ndawendaagod. Waaskode Niibiish'enh maa'jiish'kaa zhiwe be'maad'zid'jig ska'moo'waad enji niibish'wang pii gegoo ntaa zaag'kiig go bekish naad'maa'gem'gad wii nsod'wang maa'ge wii ngaas'doong maajii'gin.

**Maagon indizhaan gikendam gawaabam Michigan Department of Natural Resources**



# AANIISH ZHINDA ENJI YAA'YIN?

Babaamiwwizh Kanada's agojing awiiaasak



15 - 45 cm ginwaa

## Zaawi Giigoonh (*Carassius auratus*)

- Waasi-ozaawi izhi ozhaashkwo miinande
- Bke'diwak ozow
- Gaawiin biiway maanda dengway

### Aabiish enj'baat? Aaniish gaa bi zhi dgoshing?

Zaawi giigoonh njibaawag Kitchi Gaaming Asia ni'ke'yaa. Aapiji go ezaaw'zidjig weweni gii mingaazwag. Crucian Carp miinwaa dash ntam gii kenmi'gaazwag wii mzin'aaw'zind'waa ooshmi mdaaswaag shi biboongag'ba. Nango, maaba ezaaw'zit giigoonh mki gaaza be'maad'zidjig endaa'waat, miinwaa enji gna'wen'mindwaa, da'we'gamigong miinwaa go kitchi bgo'ja'ying kina go goji.



### Wenesh enaang'shed maaba Zaawi Giigoonh zhiwe end'na'kiit?

Zhiwe yaat maaba Ezaaw'zit Giigoonh nash kwetoon bem'gwiindeg menwezwaat zhiwe ga'ye netowging miinwaa waa zhi mii'j'waat gii'we aanind eyaajig. Zaawi Giigoonhyag kina gegoo mii'j'naa'waa, kina netowging miinwaa ewiiaaswang aanind enashkwetaajig, mii dash ooshmi noonch gegoo biyaamgag.

### Aaniish maanda ezhi nashkwetaamgag maanpii Kinadaa?

Gonda ookaanenhsag gna'wen'mindwaa maaba Ezaaw'zit Giigoonh ga'ye noonch goji mi sawebinaa maanpii Kinadaa, mii dash bemaadzidjig pagnaawaat nbiing. Maaba Ezaaw'zit Giigoonh go aapiji ntaa wiisini, miinwaa ooshmi go ani mdi'da bgo'ji'ying piidash wiigwa gnawenminba goji ma'waa'at giigoonhsan, gii goonh waawaanoonhsan miinwaa netowging bem'gwiindeg. Epiichi wiisiniwaad dash mii aki saweshkma'waat miinwaa gbishkmoo'waat zhiwe giizis be'mi naas'get wii debnang zhiwe naa ga'ye zhiwe naam'biing eb'dak'degin.



### Aaniish ge naangzheyaapa zhiwe nango yaa'aat?

Maanda nzaam kitchi wiisini'waat, Zaawzi Giigoonh nakaazam wii minzhaan'mindwaa zgime'yig wii ngwach'gaaz'waat eniizaanzidjig zgime'yig miinwaa wii mwand'waa wodi Africa oodi ga'ye Chinee aadzowin, Zaawi Giigoonh da'mim wiya kitchi twaazit miinwaa emaanjichiget. Aanwi go aawi giigoonh e ookaanenhsanit gaawii bgid'naa'ke oodi enji bgoji wang miinwaa gegwaa bgid'naake wii giitaak'wii'yaat!

Maagon indizhaan gikendam gawaabam Ontario Invading Species Awareness Izhichigewin

Maagon indizhaan gikendam gawaabam Michigan Department izhi Natural Resources



# AANIISH ZHINDA ENJI YAA'YIN?

Babaamiwizh Kanada's agojing awiiyaasak



Waawaanan 0.36mm ginwaa  
Gichi-ayaa'awi: 1.41mm ginwaa

## Kagaa'aangwash Be'maa'biid (*Adelges tsugae*)

- Gichi-ayaa'awi izhi ozaawaakwad miinwaa agwana'waasikozi
- Waabshkaa, woolly waawaan

### Aaniish maaba enash'kwe'taad gaabi zhi dgoshing Kinadaa?

Kagaa'aangwash Be'maa'biid njibaa Asia nika'yaa, miidash megwaach gii bi mchiw'ji'gaa'z'gwenh maan'pii ni'keg'mik zhiwe gii bgam'wij'gaa'deg be'naad'ag gegoo. Mki'gaa'de dash maanda Ontario, Nova Scotia miinwaa British Columbia. Niibina go Kinadaa Kagaa'aangwash Bemaabiid mtigwag niizaa'zi'wag wii HWA bi'naad'zi'win.



### Aaniish e'naang'zhem'gag maanda ga'ye end'na'kiim'gag?

Zhiwe binji'baam'gag, Kagaa'aangwash Be'maa'biid miijin Asian Kagaa'aang'wash'iin miinwaa gaa'aandag tinow zhi wiisini'win em'shkoo'zii'wang miinwaa gaawii en'taa nibo sinoom'gag.

### Aaniish maanda enji'nashk'we'taam'gag Kinadaa? Aaniish enji kitchi aawang weweni wii minzhaandming?

Kagaa'aangwash Bemaabiid miijin miinwaa ni'toon waaban'ong ni'ke'yaa Kagaanwash'iin giwe aapiji getchi pii'tendaagozidjig mem'tig'waa'ki. Mii'dash ji aanj'sach'giwe'aapa zhiwe ji moosh'too'waad ga'ye'nwaa wesiinh'sag zhinda e'pen'mand'gik wii wiis'ni'waad miinwaa wii dbi'noosh'ni'waat miinwaa go ji de binaach'too'waat ezhi maa'jiig'ing wen'jish'ing e biim'skosh'kaag pa'ne. Ni ngo'gwaad go gonda Ka'gaa'aangwash'iig go ga'ye daa zhi'we'bad wii bi tem'gag ooshmi enash'kwem'gad'kin ezaag'kii'gin dbishkoo nimosh'ii be'maa'biig.



### Aaniish ezhi min'zhaand'ming miinwaa aaniish ge'naang'zhem'gak'ba zhinda nango yaam'gag?

Kagaa'aangwash Bemaabiid daa min'zhhaanj'gaa'za wii bwaa kitchi maa'jiig'gid, wii kend'ming tem'gag miinwaa kend'ming wazhi naag'doo'wen'gaa'deg. Gaawiin moo'ke msan miinwaa ka'waab'dan be'maa'biig waaw'noonhsan tem'gag miig'wa ji ngwach'gaa'deg'ba. Waab'ji'gaa'deg gegwa mkwaak'da eshk'bag'goonhsan go da zhi ngwach'gaa'de jii'b'waa kitchi maa'jiig'ing. Mtigwag en'nib'naad'zi'waad nzaam maanda be'naad'ag go daa giish'ko'gaa'z'wag miinwaa daa jaag'zi'gaa'z'wag we'wiip. Wii mshki'kii'kaa'deg go ga'ye zhiwe mtak'mik go ga'ye daa nishin. Zhiwe shki tem'gag maanda Kagaa'aangwash bemaabiid go ezhi kitchi n'boom'gag aanind gonda Waabanong nji Kagaa'aangwash mtig'wag gaa'wii de mshkoo'zi'sii'wag wii miig'aad'moo'waad oo'we e mji'aawang.



**Maagon indizhaan gikendam gawaabam Cornell University  
Maagon indizhaan gikendam gawaabam Michigan University**



# AANIISH ZHINDA ENJI YAA'YIN?

Babaamiwizh Kanada's agojing awiiyaasak



Shpiming 2.5 m akwaa

## Epa'se'aandegwash (*Lythrum salicaria*)

- Niibiwa-okiji-ojibik, gakakaa okiji-ojibik
- Gaachdezi, giinaa niibiish
- Giinaa waabigwan, waabigwan'an giniwaanza

### Aaniish gaa'bi zhi dgosh'noom'gag maanpii Kinadaa?

Epa'se'aandegwash gii'bi dgosh'noomgad maanpii Nikek'mig wiiba go Mdaaswaag shi Zhaangswaag shi biboon'gag'ban njida go miinwaa dash go gaawii njida. Mdaaswaag shi Niizhwaaswe shi biboon'gag ba maanda enash'kwe'taamgag gii bij'gaa'de maanpii Ni'kek'mig wii segaach'geng miinwaa gina'wend'mind'waa aamoo'yig. Epa'se'aandegwash go we'wiip maajiish'kaam'gad zhiwe benaa'dag zhash'kiing miinwaa go zhiwe enj'baam'gag, miinwaa bekish bij'gaa'deg maanpii nitek'mig zhash'kiing benaad'ag Kitchi Gaaming enj'bi'deg kitchi jiimaan'aning miinwaa gwa bi'wii tinow gegoo. Maanda Enash'kwe'taam'gag maa'jiish'kaamgad nike'yaa nooding, nbiing, we'siinh'yig miinwaa waan'naa'gog baask'kaming miinwaa nakaazwin'ning zhiwe enji miish'kwa'kaag, jiige miikan'aang miinwaa mshkwa'deng.



### Aaniish maanda enashkwetaamgag maanpii ga'ye enaang'zhem'gag ga'ye oo'di njida enjbaamgag?

Epase'aandeg'wash zhi nishin wii sa'wesh'kang oo'we maajwaad aamoo'yig' memeng'waan'yig, miimiinhsawag miinwaa go yaabi aning manidoo'shenhsag. Epase'aandegwash go ga'ye daa na'kaa'zam ezhi mshki'kii'wang go noonch gegoo wii zhi naand'wech'geng. Mem'di'ge go wii naad'maa'gemgag mas'de'aap'ineng, gaa'giich'gon'daag'nang miinwaa wii mina naam'ang.

### Aaniish maanda enji nashkwechgemgag maanpii Kinadaa? Aaniish enji kitchi aawang wii min'zhaandeg?

Epase'aandegwash go temgad ezhi maanaajii'wang zhiwe bdak'dem'gag. Aapiji go kitchi maajiigin miinwaa da saweshkaan niibina gegoo bekish waazhi binaadag zhashki miinwaa gibaawksatoon wiibwaa managing jida gonaa eb'dak'dek, jiiwbwaa noonch gegoo wii maa'jii'ging. Miidash maanda enji zegendaagwag zhiwe njida gonaa ezaak'kiimgag.

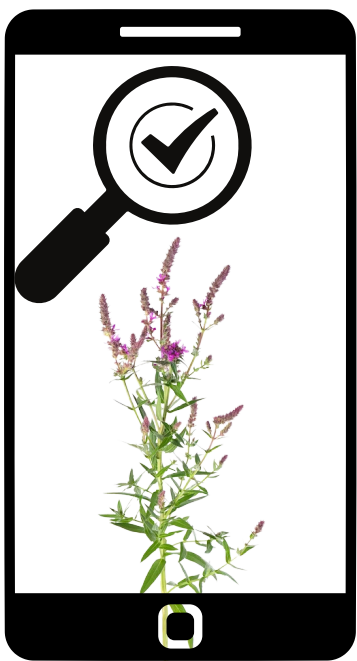


### Aaniish ezhi min'zaandming miinwaa aaniish enaang'zhemgag zhiwe nango temgag?

Kendming go wazhi nsid'waab'daming miinwaa wii moong maanda Epa'saandegwash go noondaash da ni temgad. Zhiwe maanda temgag, gaawii go nishis'noo wii ma'seng zhiwe, maa'ge nim'shag ji mab'too waa'pa wii saweshk'moo'waad miin'kaa'nenhsan. Gaawii go mamdaa kshkitch'gaa'des'noo wii ngoch'gaa'deg maanda Epa'saandegwash nzaam kitchi ntaa maajiigin wewiip. Temgad dash wiigwa ezhi wiik'ji'toong wii ngotchgaadeg maanda, bekish go dgon'ming niizh tinow Kitchi Gaaming manidooshensag niibiishensan emwaa'aajin.

Aanwi go aapiji kitchi nashkwetaamgad maanda Epase'aandegwash, ezhi waaskonenhwang dash wiigwa nishin wii miigwed naa aanind wii minak'we'yaad.

**Maagon indizhaan gikendam gawaabam Ontario Invasive Plant Council  
Maagon indizhaan gikendam gawaabam Invasive Species Centre**



# AANIISH ZHINDA ENJI YAA'YIN?

Babaamiwwizh Kanada's agojing awiiyaasak



David M. Gascoigne

12 - 30 cm ginwaa



## Ezhe'ooded Mesk'tooget (*Trachemys scripta elegans*)

- Misko-waawiyaa maanda yeyiidwi'y'ingdengway
- Ozhashkwa nis'nikwegan, kaad'an miinwaa ozow
- Es miinwaa awiiyaas ozhashkwaa izhi zaawaate naande

### Aaniish gaabi zhi tgoshing maaba Kinadaa?

Maaba Ezhe'ooded Mesk'tooged gii bin'jibaa kitchi zhaawanong naa'wo'ing oo'di Kitchi Mookmaan king. Gii bii'naa'wag maan'pii Kinadaa wii aash'too'nind'waa wesiinhsag genwenmi'gaazjig miinwaa bgoji wesiinhsag eyaajig megwaa niisaajwan Kinata gaabin'ji'baa'aat gonda gaa bgind'nin'jig.



### Aaniish maaba enaangzhed zhiwe jida enjibaad?

Maaba Ezhe'ooded Mesk'tooged kitchi aaw'wag oo'di enj'baa'aad n'taa'ged miinwaa go mii'j'mi'awi. Da 'mwa'aan wesiinhyin ebok'naw'sigwan, mag'kiin miinwaa noonch gegoo net'owging. Kitchi giigoonhyin, bineshiinhyin, kitchi gine'big'wan da mog'wan noonch go pii eni piit'zi'waat.

Mara Prendergrass gii zhibiige: "Zhiwe endaad, Maaba Ezhe'ooded Mesk'tooged kitchi aawi zhiwe kina goji yaat, mii'jim aawi miinwaa en'taaget" Kina go gegoo mii'jin'naa'waa, ewiiyaas'wang miinwaa go kina ebdak'deg. Naasaap, kitchi giigoonhyig, kitchi bineshiinhyig miinwaa gwa noonch ezhnaawgzijig wesiinhyig da mwag'waan noonch go eni piid'zi'waat.

### Aaniish maaba enji kitchi nash'kwe'taad kina goji Kinadaa? Aaniish enji kitchi aaw'wang wii minzhaandmindwaa?

Maaba Ezhe'ooded Mesk'tooged nash'kwe'taa Kinadaa nzaam da ndizi ga'ye mii'jim miinwaa waa daat. Gonda Ezhe'ooded Mesk'toogejig go ga'ye aash'aa'waan ezhi manidoonhs'wi'yaat ezhnikaadeg ranavirus getchi mji aaw'ni'nig aanind giwe wesiinhyin nbiing enji baajig. Gaawii go nishi sii'wag besha ji mi yaa'aa'pa wesiinhyig nbiing bemi'yaanjin dibishkoo mshiikenhyin ge maad'zip'niig megwaach niishtana biboon.



### Aaniish ezhi minzhaan mindwaa miinwaa aaniish gonda enaang'zhe'yaat zhiwe nango yaa'aat?

Zhiwe naam'ya'ing Aquatic Invasive Species Regulations under the Fisheries Act, gaawii mam'daa wii bgid'nind'waa goji nbiing waan'ji nishis'gwaa. Giishpin wiya gne'en'maat ninda Ezhe'oodenjin Meskwa tooget aabdig wii gbaak'waat mii maanda bezhig ezhi min'zhaan'mind'waa. Giishpin zhiwe yaa'aat waanji sa'wesh'kaa'aat bgo'ja'iing ngod'waas'we tenwan minig "ge zhi naad'maage'yaad miigwe'yaat": wii Kitchi zhiin'waat miigwe'aat enjishing zhiwe yaa'aat, wii aash'too'seg bembideg, mshki'kiiwang yaa'aat, aaw'waat net'aa'gejig maage mii'j'mi'waat, miinkaa'nenhsan miigwe'aat miinwaa aki maa'jiim'gak zhiwe yaa'aat wii mina ging zhiwe besha kina gegoo.

Maagon indizhaan gikendam gawaabam Nova Scotia Invasive Species Council

Maagon indizhaan gikendam gawaabam Canadian Wildlife Federation



# AANIISH ZHINDA ENJI YAA'YIN?

Babaamiwwizh Kanada's agojing awiiyaasak



Emilio Concari

Shpiming 13 cm ginwaa  
(gaawi nishkanzh ginwaa)



## Eg'waan'zad Zhagenjigan (*Faxonius rusticus*)

- Ozhawshko ashi waabijiyaa naande ashi misko-zaawaate naande
- Miskowaa edawayi'ii es
- Makade waawiiya besho-nishkanzh akwaa

### Aaniish gaa bi zhi dgoshing Kinadaa?

Ezaa'waan'zad Zhagenjigan njibaawag Ohio ziibiing naamyaa'ing oo'di Kitchi mookmaan Kiing. Gii bi dgoshinoog gaawii go njida gii bi yaa'wag giigoonh'ke kik'oong, miinwaa zhiwe enji meshk'doon'geng, maa'ge go njida go jida gonaa nango ezh'webag. Nango dash kina goji mki'gaazwag oo'di southeastern Manitoba, noonch go goji Ontario, miinwaa south central Quebec.



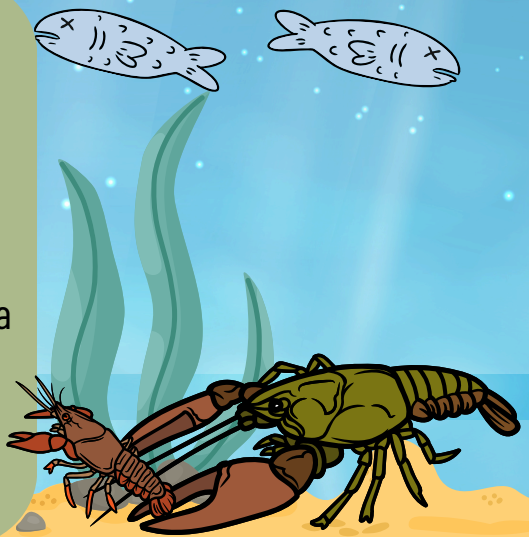
### Aaniish enangzhed maaba ga'ye zhiwe enjbaad?

Dibishkoo go aanind zhagenjiganag, miigo gonda emaanji kitchi aaw'jig, miij'waad go ga'ye noonch gegoo etemgag.

### Aaniish gonda enji kitchi naskwetaa'aad maanpii Kinadaa. Aaniish enji kitchi aawang weweni wii minzhaandmindwaa?

Ezaa'waan'zad Zhagenjigan gaawii mina'se'sii'wag zhinda Kinadaa nzaam kitchi maajiishkaawag (maaba ekwid bgidnaan ooshmi ngodwaag waawnoonhsan godi bgidniged) miinwaa go minagood manj go ge pii chi zhaweb'digwenh nbi, epiich'ji'wang, ezhe'yaam'gag nbi, miinwaa go noonch gegoo miij'naa'aa ewiiyaas'wang miinwaa maanwang. Mdidwag ge miinwaa ntaa miigaazwag piidash wiigwa aanind zhagenjiganag, miidash aanind zhiwe jida gonaa enj'baa'jig, miinwaa dash gaawii zaagi'ye siiwag aaning giigoonhyig ge mawaap'niin miidash maajaa'aad giuwe aaning zhagenjiganag zhiwe ga'ye ge yaap'niig.

Ezaa'waan'zad Zhag'enjigan enashkwetaataad zhinda Kinadaa nzaam mdidoog, miinwaa kitchi wiisiniwag miinwaa kitchi maajiishkaawag piidash gonaa njida zhiwe eyaap'niig. Ooshmi go bak'na'waa'an niwe njida gonaa zhagenjigaanhsan miinwaa noondaash yaawag gonaa njida zhagenjigaanhsag nzaam kina ego miijinaa'aah zhiwe yaa'aad. Owa kwe Ezaa'waan'zad Zhagenjigan da miw'doo'naa'waah niibina waawnoonhsan shkwe'yaang zhiwe zoo'waan'gong; miidash go gaawii mamdaa wiya yaabi ji deb'nan'ba niwe waawnoonhsan, gaawii dash wiya yaabi ji'de pkan'dwepaa.



### Aaniish ezhi minzhaandmindwaa gonda miinwaa aaniish ezhi nishiwaad nango yaa'aat?

Gdaa naab'ji'aah'naa go noonch zhaag'enjiganag wii da'kendming ezhi bii'naagog kina nbi nzaam da ngoch'too'naa'waah myaa'naa'dag. Bemaadzid wii nsoo'naat ninda Ezaa'waan'zad Zhaagenjigan nishin ji nsind'ba owa kwe Ezaa'waan'zad Zhagenjigan. Miinwaa dash go dbaa'j'mang waab'mindwaa gonda enashkwetaa'jig zhawenjiganag go nishin wii bwaa sawesh'kaa'aat.

[Maagon indizhaan gikendam gawaabam CABI Compendium](#)  
[Maagon indizhaan gikendam gawaabam Government of Ontario](#)



# WHY ARE YOU HERE?

A Guide to Canada's Non-Natural Species



Dmitry Kulakov -



6 mm - 15 mm ginwaa

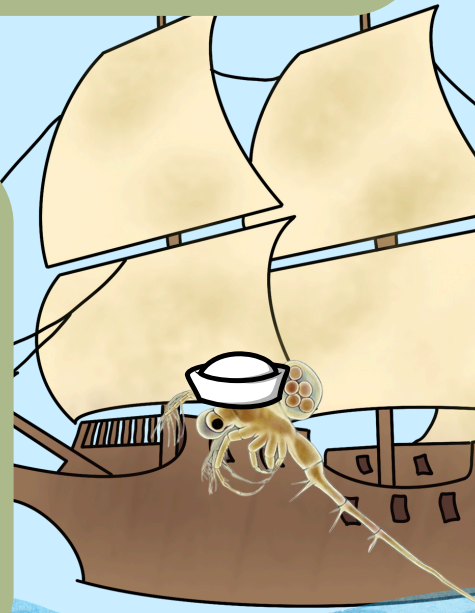


## Bakwan Gijaag'neshiinh (*Bythotrephes longimanus*)

- Agaas enhs
- Bezhiig, gichi, makade shkiinzhiig
- Bezhiig, gichi ozow wiji niio pikwan

### Aaniish maaba gabi zhi dgioshing Kinadaa?

Bakwan gijaag'neshiinh aawi getchi nash'kwe'taad ntaam gii zaa'ge'ye Kinadaa Mdaas'waag shi zhaangswaag shi Nshwaasmidna shi niizh biboongagba. Njibaa wag gonda Kitchi Gaaming; gii bi dgosh'noo'waad eska'teg nbiing kitchi jiimaaning giibi yaa'waat. Kina dash go maanpii naanan kitchi gam'iin yaa'wag nango, aaning gegwa zaagig'ning Ontario, Manitoba ne'ying (mdaaswaag shi zhaangswaag shi naanan biboongag), miinwaa Quebec (Niizhing mdaaswaag shi mdaaswaag shi niwin biboongag)



### Aaniish gonda enaangzhe'yaad zhiwe enj'baa'aad?



Bakwan Gijaag'neshiinh kitchi aawi zhiwe ga'ye enjbaad nzaam naad'maagemgad zhiwe enji maawn'ji'se'yaad miinwaa ga'ye miijim aawi giuwe kitchi giigoonhyin zha'maat. Maanda dash damim na'ye da mag'waan kitchi giigoonhyin naadmaagewag wii naash'kaa'aat bangii ezhiin'waat.

### Aaniish gonda enji nash'kwe'taa'aat zhiwe yaa'aat kinadaa? Aaniish enji kitchi aawang wi minzhaand'waa?

Maaba Bakwan Gijaag'neshiinh nashkwegmigzi Kinadaa nzaam da mwaa'aan noonch egaa'chiinh'gin ge miij'giba miidash noonch naash'semgag owe wenjishing. Nzaam ezhi'nikaazwaat Gijaag'neshiinh, gaawii go kitchi mdid'siiwag. Nashkwe'taa'wag gegwa giigoonh'keng nzaam baa'taashnoog zhiwe wii bgid'waang.

Bekish go gonda giigoonhyig emwaa'aajin Bakwan Gijaagneshiinhin bash'gen'maa'aan niwe bangii noondaash ebakwan'aawsin'jin, miidash ooshmi ji ni yaa'pa giuwe ooshmi ebakwan'aaw'jig.



### Aaniish ezhi minzhaand'mindwaa gonda miinwaa aaniish enaang'zhe'yaad?

Gaawii megwaa gegoo tesnoo gezhi ngaabnindwaa gonda Bakwan Gijaag'neshiinhig, aabdig dash wiigwa daa ngoch'gaaz'wag. Wenjishing wiigwa aabdig weweni daa biin'chi'gaade, ska'te'gaa'de miinwaa daa bengwichgaade nbiing enkaazang, aankoob'jigaadeg miinwaa go aanind enkaazang nbiing. Naad'good'noong gegwa miijim aawag jida gonaa maanpii nike'yaa giigoonhyig dbishkoo ga'wek miinwaa sa'ye.



Maagon indizhaan gikendam gawaabam Minnesota Department izhi Natural Resources  
Maagon indizhaan gikendam gawaabam Department izhi Fisheries miinwaa Gichi-gami



# AANIISH ZHINDA ENJI YAA'YIN?

Babaamiwizh Kanada's agojing awiiyaasak



Waawaan shpiming izhi 5 cm ginwaa  
Gichi-ayaa'awi: 5 cm Oningwiigan  
Waawaan nigkwaa: 5 - 7.5 cm

## Nimkii Dikmin (*Lymantria dispar dispar*)

- Bmidoosh wiji naano neniish zhaawshko neniish miinwaa ngodaawo neniish misko waawiiya
- Waabishkaa-zaawaate, "Nimkii" waawaan nigkwaa
- Naabe Dikmin zaawi miinwaa nooshe dikmin izhi waabshkaa, yeyiidwiy'iing wiji makade wshkibdoon maa oningwiigan

### Aanish maabe gaa bi zhi digoshing Kanada?

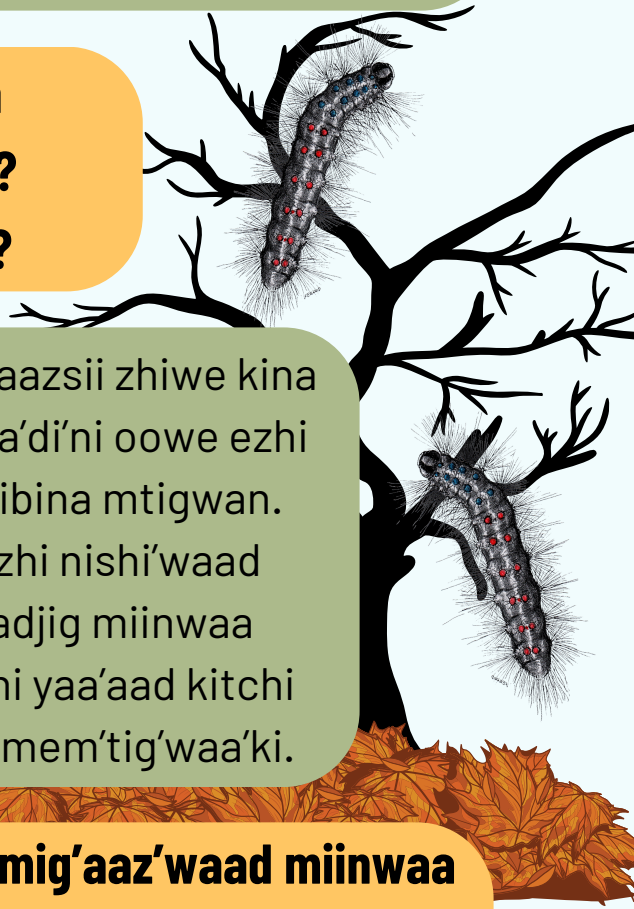


Maaba Nimkee Dikmin kitchi Gaaming gii bi njibaa. Gii bijigaaza maaba maanpii nike'yaa akiing wii aabjigaazad zenbaanh moo'se zhichge'win gaawii dash gii mina'bides'noo owe. Maanpii akiing, yaawag oodi Wemtigoozhi akiing (Quebec), New Brunswick, Nova Scotia, Ontario miinwaa Prince Edward Island. E'binaadag mshi miinwaa daabaanag mii zhiwe enji maajiishkaa'aad.

### Aaniish maabe enaang'zhed ga'ye oodi binji'baad?

Maaba ga'ye binjib'aad dam'waan niibina tinoowan mitig'wan, dash wiigwa ga'ye doo'waan nes'go'jin miinwaa waa maazhig'jin.

### Aaniish maaba Nimkii Dikmin enji mina wii'doo'kaaz'sik kina go ko'jing Kanada? Aanish aabdig wanji ka'waab'min'dwaa?



Maaba Nimkee Dikmin gaawin mina wiidookaazsii zhiwe kina go goji kojiing KinaDaa nzaam zeg'en'daa'gwa'd'ni oowe ezhi moo'se wid ani ndaad ziim gadnik nisaan niibina mtigwan. Miidash maanda ji ni noondaash nishing ezhi nishi'waad mtigwag, miinwaa gii'we mtigwan em'waadjig miinwaa niibina miijim. Gonda Nimkee Dikminag wii'ni yaa'aad kitchi gbe'ying go da kitchi aanch'too'naa'waa kina mem'tig'waa'ki.

### Aaniish waa zhi minzha wen mig'aaz'waad miinwaa aanish ge naang zhe yaat zhiwe nango yaa'aat?

Aapiji go kitchi piitendaagod wii ken'mind'waa gonda Nimkee Dikminag jibwaa binaaji saweshkaa'aad. Daa ksh'kitch'gaa'de chi'gaa'deg msh'kiki nswa'gan'an (pheromone-based traps. Egaach'iw'jig Nimkee Dikmanan go daa mig'aaz'wag wiig'wa gaashk'jii'ming miinwaa bi'naaj'toong niwe waawanoonhsan. Emshki'kii'kaadeg zhich'ge'win dibishkoo Bacillus thuringiensis mshki'ki ziig'wep'ji'ge'win daa na'kaa'zam wii min'zhaan'mind'waa jibwaa moo'se'waad. Nimkee Dikminan kitchi nboo'kii'chi'ge wag zhiwe kojiing yaa'aad aabdig dash weweni wii minzhaand'mind'waa.

**Maagon indizhaan gikendam gawaabam Canadian Council on Invasive Species**  
**Maagon indizhaan gikendam gawaabam Government of Ontario**

# AANIISH ZHINDA ENJI YAA'YIN?

Babaamiwwizh Kanada's agojing awiiaasak



shpiming 1.5  
akwaa

## Waabshki Wiishkbi Nesoobgaak (*Mellilotus albus*)

- Tig miinwaa grooved stem
- Niibiish wiji 3 niibiish-kaa
- 20 - 65 agaasaa, Waabishkaa waabigwan

### Aabiish enji baamgag? Aaniish gabi zhi digoshnoomgag?

Waabshki Wiishkbi Nesoobgaak (*Mellilotus albus*) gii bin ji baamgad Kitchi Gaming (EurAsia) Gii bij gaade maanpii nitek'mik maanda "zhowsh'kwa paab'wen" wii naad'maa'gem'gag wii zaak'kiich'geng, miinwaa miijim wii aaw'ni'nik ookaan'ag. Waabshki Wiishkbi Nesoobgaak aawan owe "waasmoo mide maajiizh'kaachigan" shkich'igan wii aan'kes'idoot owe waasmoo mide (N2) bemi'yaamgag ji'de na'kaaz'giba zhiwe enji gi'ti'geng enkaa'zang wii kitchi maa'jiik'chi'geng.



### Aaniish gonda Ebinashkwegmigzidjig gda kiimnaang enji mina na'kiim'gas'noong kina go goji maanpii Kanada?

Mi da zhichgeng wii nigo'chi'gaadeg maanda Waabshki Wiishkbi Nesoobgaag aab'dan kiim go, mii dash wiigwa kitchi maajiish kaag miinwaa. Maanda Waabshki Wiishkbi Nesoobgaag baash'da'aan naasaab gegaa tinow me'yaajiik'gin ooshmi dash kitchi maa'jii'gin pii dash niwi aanind jida gonaa eteg'ba zhiwe akiing.

### Aaniish maanda Waabshki Wiishkbi Nesoobgaak ezhe'yaam'gak zhiwe njida gona enjibaamgag?

Maanda Waabshki Wiishkbi Nesoobgaak maa'jii'gin zhiwe tinow enji mina'zheyaam'gak oodi Kitchi Gaming. Na'kaazam go zhiwe wii gi'ti'geng, na'kaazam dash wiigo ga'ye wii nakaazang wii sha'maaw'sang zhiwe enji mina'ging; de'mina'gin dash go ga'ye noondaash go bangii bibooni zha'we'bag miinwaa go shpak'mik gegwa zaa'kiim'gad. Mshkiki gegwa zhitoong da nakaazam.



### Aaniish waa zhi min'zhaand'miying ge zhi'gaab'wiim'gag wiidookaaz'iigag zhinda nango bi'mi'tem'gag?

Bangii go ninda goji maajiishkaag waaswaaskones'nok daa pkoj'bij'gaa'de'noon maa'ge go daa mshkwazh'gaade'noon. Pii dash zhiwe enji mg'i'ging, ngaasmoon'niigin zhiwe mndog'na'ming go nishin epiichi zaag'kiik kina gegoo. Giishpin go aa'bi'ji nshi'naa'ji sa'wesh'kaag daa na'kaa'zam emshki'kii'wang ziig'wep'jigan.

Maanda tinow maajiigwin niibiishan temgad men'po'gok (vanilla) nike'yaa, daa chigaa'de go zhiwe gija'ying maage go wii digon'geng jiibaak'weng maage boo'daa'kweb'nigeng. Waabshki Wiishkbi Ne'soob'gaak dash go ga'ye te'ni emshki'kii'wang wii ba'gaab'wii'toong doosk'we'aa'biin, zhiwe ji nishing'ba wii miik'ming mskwi weweni esa'wesh'kaas'nog. Giishpin wii sgak'naming weweni go daa naad'maa'gem'gad jibwaa kitchi maan'naad'jiimgag kina go goji miijim enji mina ging.

**Maagon indizhaan gikendam gawaabam Ontario Invasive Plant Council's Mino gimaa akeyaa ezhichigewin Waabshki Wiishkbi Nesoobgaak**  
**Maagon indizhaan gikendam gawaabam Minesota Department izhi Natural Resources**

